

Industrial Power Wash Hose Reels



Featuring our patented 2-Year "NO-LEAK" swivel

Made from rugged stainless steel and forged brass, this **full-flow**, 90° high-performance swivel is specifically engineered for the industrial pressure washer industry. All reels come equipped with the standard, 1/2" x 3/8" size, but can be upgraded to an optional 1/2" x 1/2" size.

4400 Series

Non-Pivot Reels



Hose not included
Tubular Base sold separately

Non-Pivot Reels

Built to industrial strength standards, the 4400 series bolt-on reels provide years of leak-free operation and exceptional performance under rigorous conditions. Plus, with a variety of mounting options, these are the most versatile hose reels on the market!

Technical Specifications

All 4400 series reels are rated at 5000 PSI and 325° F and have a 2 year warranty.

Model 4413

3/8" Capacity100 ft.
1/2" Capacity75 ft.
Ship Wt.18 lbs.

Model 4416

3/8" Capacity200 ft.
1/2" Capacity150 ft.
Ship Wt.22 lbs.

NOTE: Reel capacities may vary depending on hose brand and style.



Exclusive Bolt-On Design

Rapid Reel's innovative mounting system allows each 4400 series reel the ability to be bolted to a variety of mounting options with ease. See back page for more details.

Steel Pipe Axle

Featuring schedule-80 steel pipe within the 1-1/4" tubular axle, this rugged design is ideally suited for industrial applications.



STANDARD FEATURES on all reels

All Metal Construction

High grade flat and tubular metal is formed to precise tolerances for long-lasting results. Rapid Reel hose reels are built for those who appreciate great quality.

Cam-Lever Brake

Keeps the hose from unspooling while reel is in use. Turns off and on with the flick of a finger. Durable material will last a lifetime.



Spring Reel Lock

Located on the back of the reel, this lock keeps the reel from unwinding when not in use. Spring action pin provides easy engagement with simple pull-n'-turn motion.



Solid Surface Drum

An all metal drum provides a smooth, circular surface for the hose to wrap around. Having no sharp corners, bends or openings extends hose life.



Smooth Spin Bushings

Pressed between the reel and axle, these durable, long-life bushings will keep the reel spinning smoothly for years. Completely maintenance-free.



5500 Series

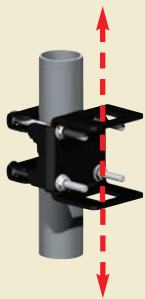
360° Pivot Reels



Hose not included.

Model 5513

Patented 360° Pivot Design!



Patented Quick-Attach Socket Feature

Allows reel to be mounted to, (or removed from), walls or portable pressure washer frames in just seconds! Rapid Reel's SOCKET style mounting brackets (see back page) allows for quick and easy installation to the frames of most major pressure washer brands.

360° Pivot Reels

Offering nine exclusive features, this is the reel that revolutionized the pressure washer industry! Its patented design allows the reel to be attached, or detached, from a wall or pressure washer frame in just seconds. It also delivers a full 360° pivoting action... keeping the reel in constant alignment with the hose.

Technical Specifications

All reels are rated at 5000 PSI and 325° F and have a 2 year warranty

Model 5513

3/8" Capacity100 ft.
1/2" Capacity.....75 ft.
Ship Wt.33 lbs.

Model 5516

3/8" Capacity200 ft.
1/2" Capacity.....150 ft.
Ship Wt.35 lbs.

NOTE: Reel capacities may vary depending on hose brand and style.

Hose Guide

Made for left or right-hand operation, the "flip-over" hose guide assists in pulling hose out and reeling it back. Keeps hands clean and injury free.



360° Pivot Lock

Locks reel in one of eight positions to keep it from pivoting while rewinding or in transport. Spring-action pin provides easy engagement with simple pull-n'-turn motion.



Steel Pipe Axle

Featuring a schedule-80 steel pipe within the curved 1-1/4" tubular axle, this design is ideally suited for high pressure, high temperatures and 360° pivoting action.



STANDARD FEATURES on all reels (continued)

Loop-n'-Clamp Design

Our innovative method of securing the hose to the reel extends the life of both the hose and reel by protecting the swivel and hose fittings from hard pulls.



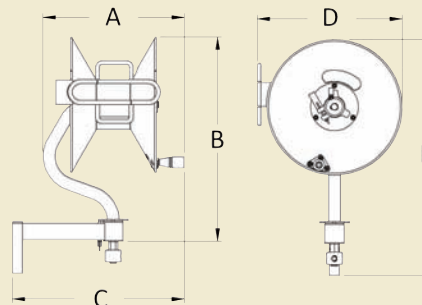
Comfort Grip Handle

This free-spinning handle rides on a solid steel shaft making rewinding ultra-easy. Made from high-strength material, the full-palm design is virtually unbreakable.



Weather Resistance

With special agents for extreme durability and weather resistance, our powder-coat paint creates a hard, smooth finish that stays attractive for years.

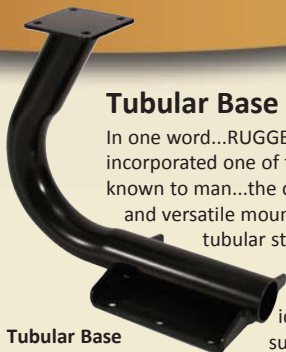


Dimensions

	5513	5516
A	16"	16-3/4"
B	22-5/8"	24-3/8"
C	19-5/8"	20-1/2"
D	13-7/8"	17-1/4"
E	26-1/2"	28-1/8"

Mounting Brackets

"Bolt-On" Brackets for 4400 Series Reels

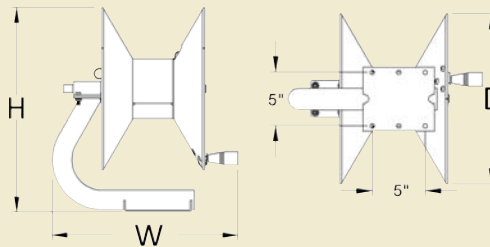


Tubular Base
Part # 1024
(Formerly 0.2001.037)
Ship Wt. 8 lbs.

Tubular Base Mounting

In one word...RUGGED! Rapid Reel engineers have incorporated one of the strongest natural designs known to man...the circle...to create a uniquely durable and versatile mounting base. Made from 1-3/4" tubular steel, this base can easily mount to any solid wall or flat surface. The strength of its design makes it an ideal fit for demanding conditions such as trailers, flatbeds or other vehicle mount applications.

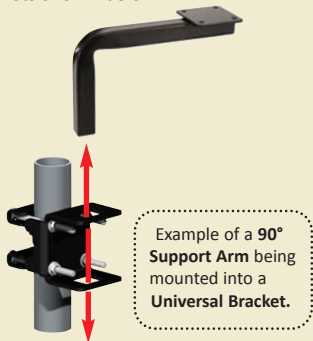
Model	H	W	D
4413	18-5/8"	17-7/8"	13-1/8"
4416	20-3/8"	18-7/16"	16-1/8"



Tubular base shown with model 4413

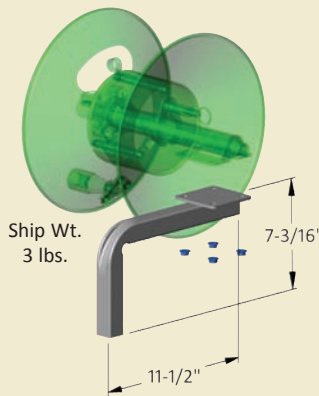
Support Arm Mountings

Mounting a 4000 Series hose reel to the frame of a portable pressure washer is an easy process. Select one of these three support arms to attach to the reel. The reel/arm combo then slides into one of the **SOCKET** brackets shown below.

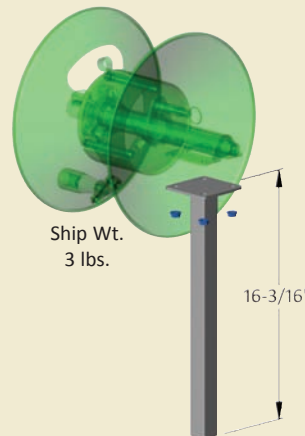


Example of a 90° Support Arm being mounted into a Universal Bracket.

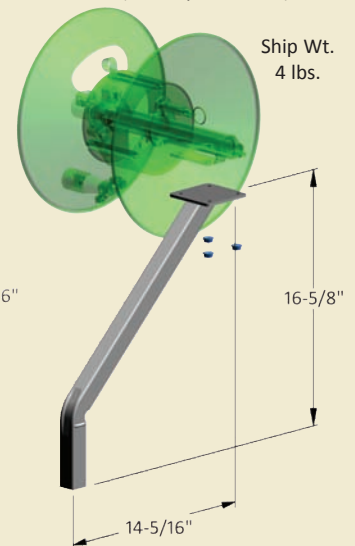
90° Support Arm
Part #1021 (Formerly 0.2001.026)



Vertical Support Arm
Part # 1022 (Formerly 0.2001.027)



45° Support Arm
Part # 1023 (Formerly 0.2001.028)



"Socket" Brackets for 5500 & 4400 Series Reels



Wall Bracket
Part # 1019
(Formerly 0.2001.003)
Ship wt. 2 lbs.



Bracket for Karcher® HDS Full Size
Part # 1026
(Formerly 0.2001.026)
Ship Wt. 9 lbs.

Bracket for LANDA® PHW and MI-T-M® HHP Washers
Part # 1020
(Formerly 0.2001.006)
Ship wt. 5 lbs.



Universal Bracket

Part # 1027
(Formerly 0.2001.100)
Ship Wt. 2 lbs.

Clamps onto vertical or horizontal round pipe, square tubing, or angle iron...up to 1-3/4" in size.



©2009 Eley Corporation
P.O. Box 22640
Lincoln, NE 68542
1-800-523-4321
www.rapidreel.com
Rev. 0609